



CE

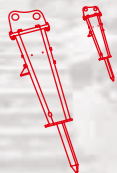
ROTAIR



HYDRAULIC
BREAKERS

OLS

VIBRO-SILENCED
ECOSILENT RANGE



OLS 50 >>>
OLS 2200

>>> 60 kg
2200 kg



EASY
MAINTENANCE



CONTROL
POWER SYSTEM



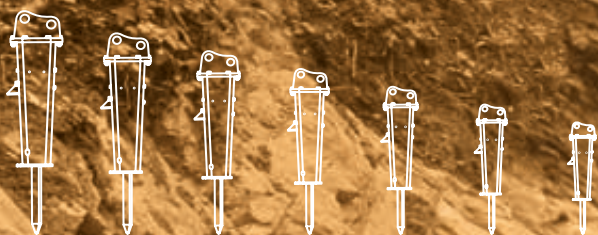
SUPER
SILENT



EASY
INSTALLATION

**BORN
TO DEMOLISH**

- › An innovative hydraulic breakers range, which offers the best available in the demolition field for use on site operating machinery.
- › A truly exclusive silenced version which, due to the specific design of its supporting structure, ensures that acoustic noise levels are reduced to a minimum, the advantages being environmental-friendly operating ease.
- › Installation simplicity on supporting operational machines, thanks to internal hydraulic stabiliser elements, pressure and hydraulic capacity features.
- › High counter-pressure tolerance on the discharge circuit which makes for application simplicity and high performance levels in terms of power levels per stroke.
- › Equipped with “**CONTROL POWER SYSTEM**” device, which, as well as automatically recovering the power during the beat stage, also optimises the actual hammer performance according to the specific needs of the user.
- › Reduced maintenance frequency requirement, simple and practical maintenance, ease and constant monitoring on the internal hammer parts thanks to the “**EASY MAINTENANCE**” concept.



OLS

#RANGE

BORN TO
DEMOLISH



PRactical ADVANTAGES OF OUR NEW MANUFACTURING TECHNOLOGY:

EASY
MAINTENANCE



CONTROL
POWER SYSTEM



SUPER
SILENT



EASY
INSTALLATION



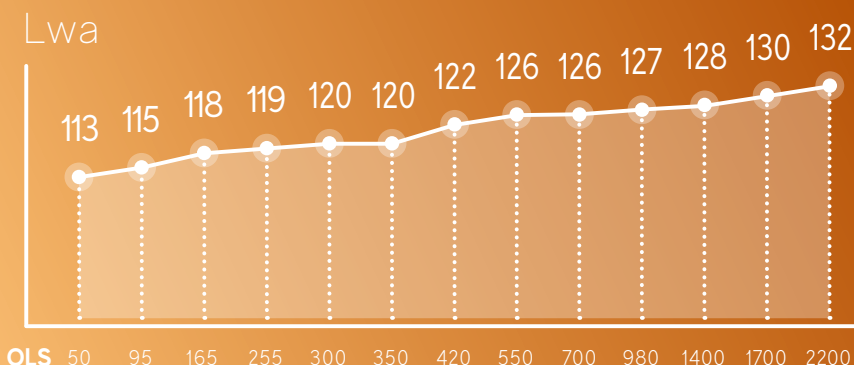
- › Closure saddle of the single-block casing and beating section incorporating the point of bucket attachment on the relative operating machines.
- › Greater compactness of hammer on longitudinal section thereby making for greater operational functionality, especially in restricted sections.
- › External structure, more streamlined, ergonomic and even more solid.
- › Casing of the beating body of single-section "integrated" type, fixed by specific swabs made of elastic and anti-vibration material.
- › Reduced operational stress of the hammer-supporting machine unit, thanks to the reduced reactivity transmitted by the hammer, dampened by the antivibration device.
- › Increased performance of the beater element which is suspended in an elastic manner and allows the recovery of the actual kinetic energy generated by the beater element during the demolition work, transforming it into potential elastic energy that is then returned to the implement.
- › Total elimination of the locking screws which secure the beating section to the lateral supports with consequent advantages in terms of maintenance.
- › Acoustic pressure levels generated during the beating stages, reduced to the minimum for its category, guaranteed and certified according to the new community directive in force.

THEIR SUBTLE OPERATING
FEATURE IS THEIR STRONG
POINT. THEY ARE HIGHLY
COMFORTABLE AND SILENT,
WITH AN APPEALING DESIGN.

A RANGE OF HYDRAULIC
BREAKERS SPECIFICALLY
DESIGNED TO MEET ALL
YOUR REQUIREMENTS.

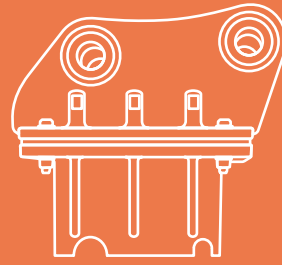


Reference table of sound power system (Directive 2000/14/CE)



OLS

LIGHT RANGE



SADDLE



PLATE



ACCUMULATOR SET WITH ENHANCED VOLUME FOR IMPROVED ENERGY RECOVERY AND RETURN

SINGLE SECTION CASING WITH ANTI-WEAR REINFORCEMENT

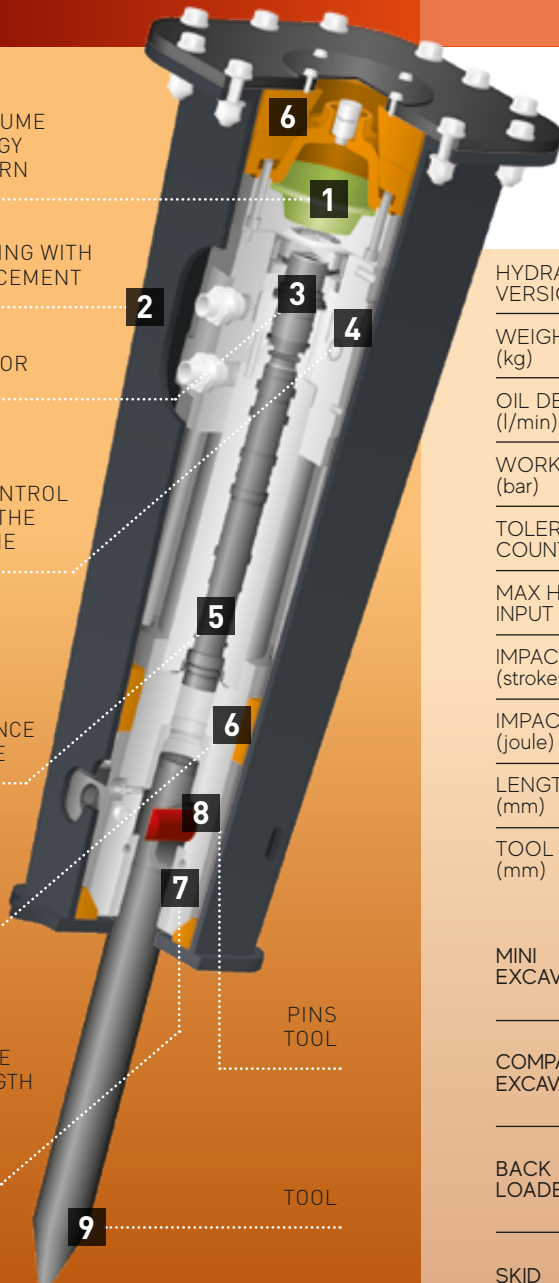
INTERNAL DISTRIBUTOR

VALVE: PRESSURE CONTROL INDEPENDENT FROM THE SUPPORTING MACHINE

BEATING PISTON ELONGATED FOR IMPROVED PERFORMANCE IN THE BEATING STAGE

VIBRO-ABSORBENT SHOCK ABSORBER SET

ANTI-WEAR BUSH GUIDE TOOL. ENHANCED LENGTH FOR IMPROVED TOOL GUIDANCE AND EXTENDED DURATION



TECHNICAL DATA

HYDRAULIC BREAKER VERSION

WEIGHT (kg)

OIL DELIVERY (l/min)

WORKING PRESSURE (bar)

TOLERATED COUNTER-PRESSURE

MAX HYDRAULIC INPUT POWER (kW)

IMPACT FREQUENCY (strokes/min)

IMPACT ENERGY (joule)

LENGTH WITH TOOL (mm)

TOOL DIAMETER (mm)

MINI EXCAVATORS

COMPACT EXCAVATORS

BACK LOADERS

SKID LOADERS

OLS
50

OLS
95

| | OLS 50 | OLS 95 |
|--------------------------------|----------------|----------------|
| HYDRAULIC BREAKER VERSION | SADDLE / PLATE | SADDLE / PLATE |
| WEIGHT (kg) | 60 / 54 | 100 / 88 |
| OIL DELIVERY (l/min) | 15 ÷ 20 | 23 ÷ 32 |
| WORKING PRESSURE (bar) | 110 ÷ 150 | 100 ÷ 140 |
| TOLERATED COUNTER-PRESSURE | 15 bar | 15 bar |
| MAX HYDRAULIC INPUT POWER (kW) | 5 | 7 |
| IMPACT FREQUENCY (strokes/min) | 1000 ÷ 1500 | 800 ÷ 1200 |
| IMPACT ENERGY (joule) | 100 ÷ 122 | 150 ÷ 230 |
| LENGTH WITH TOOL (mm) | 893 / 784 | 1112 / 970 |
| TOOL DIAMETER (mm) | 36 | 48 |
| MINI EXCAVATORS | 0,8 - 1,0 ton | 1,2 - 2,4 ton |
| COMPACT EXCAVATORS | - | - |
| BACK LOADERS | - | 1,6 - 2,5 ton |
| SKID LOADERS | - | 1,3 - 1,8 ton |



PINS TOOL

TOOL



**OLS
160**

**OLS
255**

**OLS
300**

**OLS
350**

**OL
350^{TR}**

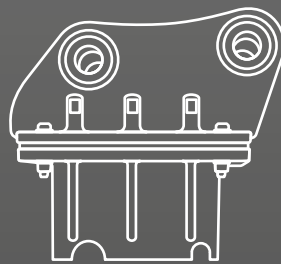
**OLS
420**

**OLS
550**

| SADDLE / PLATE | SADDLE / PLATE | SADDLE / PLATE | SADDLE / PLATE | SADDLE | SADDLE / PLATE | SADDLE / PLATE |
|----------------|----------------|----------------|----------------|---------------|----------------|----------------|
| 180 / 162 | 255 / 236 | 275 / 257 | 350 / 330 | 380 | 425 / 400 | 568 / 504 |
| 30 ÷ 42 | 40 ÷ 60 | 40 ÷ 60 | 50 ÷ 75 | 50 ÷ 75 | 60 ÷ 80 | 80 ÷ 100 |
| 100 ÷ 140 | 100 ÷ 140 | 100 ÷ 140 | 100 ÷ 140 | 100 ÷ 140 | 100 ÷ 140 | 100 ÷ 140 |
| 15 bar | 15 bar | 15 bar | 15 bar | 15 bar | 15 bar | 15 bar |
| 10 | 14 | 14 | 18 | 18 | 19 | 23 |
| 800 ÷ 1200 | 650 ÷ 1000 | 650 ÷ 1000 | 700 ÷ 1000 | 700 ÷ 1000 | 600 ÷ 950 | 600 ÷ 850 |
| 240 ÷ 360 | 450 ÷ 590 | 450 ÷ 590 | 625 ÷ 830 | 625 ÷ 830 | 680 ÷ 900 | 680 ÷ 1060 |
| 1279 / 1142 | 1496 / 1244 | 1543 / 1304 | 1569 / 1363 | 1569 | 1753 / 1547 | 1887 / 1582 |
| 53,7 | 67,5 | 71,5 | 77,5 | 77,5 | 81,5 | 81,5 |
| 2,4 - 3,2 ton | 3,4 - 5,0 ton | 4,0 - 5,5 ton | 5,5 - 7,0 ton | - | 8,0 - 9,0 ton | 9,0 - 10,0 ton |
| - | - | - | 6,0 - 7,0 ton | - | 7,5 - 8,0 ton | 7,5 - 9,0 ton |
| 2,7 - 4,8 ton | - | 5,5 - 6,0 ton | 7,5 - 9,0 ton | 7,5 - 9,0 ton | 9,0 - 10,0 ton | - |
| 2,0 - 2,5 ton | 2,6 - 3,5 ton | 3,5 - 4,0 ton | 3,8 - > ton | - | 4,0 - > ton | 4,0 - > ton |

OLS

HEAVY RANGE



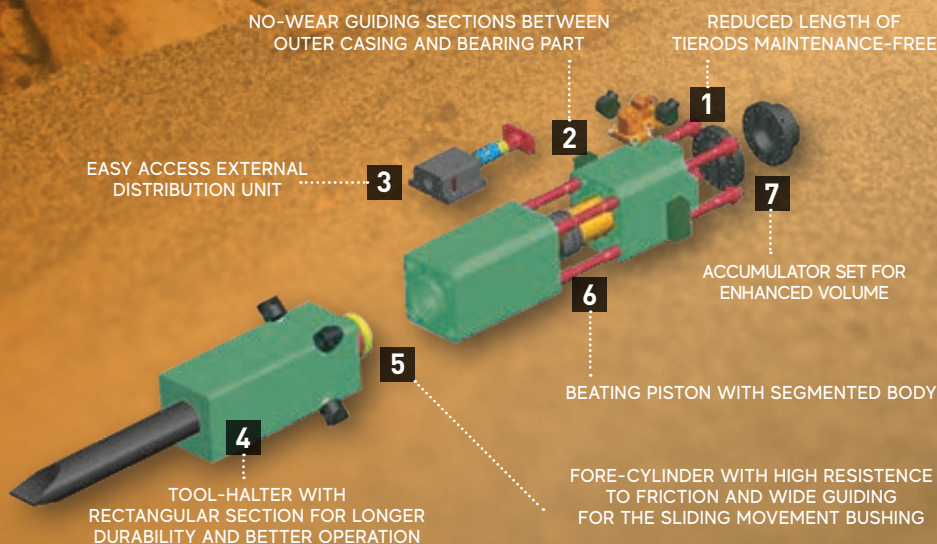
SADDLE



PLATE



SINGLE SECTION CASING WITH ANTI-VIBRATION SYSTEM



TECHNICAL DATA

HYDRAULIC BREAKER VERSION

WEIGHT (kg)

OIL DELIVERY (l/min)

WORKING PRESSURE (bar)

TOLERATED COUNTER-PRESSURE

MAX HYDRAULIC INPUT POWER (kW)

IMPACT FREQUENCY (strokes/min)

IMPACT ENERGY (joule)

LENGTH WITH TOOL (mm)

TOOL DIAMETER (mm)

EXCAVATORS





OLS 700

OLS 980

OLS 1400

OLS 1700

OLS 2200

| SADDLE/PLATE | SADDLE/PLATE | SADDLE/PLATE | SADDLE/PLATE | SADDLE/PLATE |
|-----------------|-----------------|-----------------|-----------------|-----------------|
| 700 / 620 | 970 / 870 | 1350 / 1180 | 1700 / 1430 | 2200 / 1850 |
| 80 ÷ 100 | 90 ÷ 120 | 105 ÷ 140 | 130 ÷ 160 | 160 ÷ 195 |
| 150 | 160 | 170 | 170 | 175 |
| max 25 bar | max 25 bar | max 25 bar | max 25 bar | max 25 bar |
| 25 | 32 | 40 | 45 | 57 |
| 600 ÷ 900 | 700 ÷ 900 | 400 ÷ 900 | 400 ÷ 800 | 350 ÷ 650 |
| 2000 | 2400 | 3200 | 4200 | 6100 |
| 1900 / 1620 | 2050 / 1720 | 2350 / 2020 | 2734 / 2384 | 2910 / 2560 |
| 95 | 105 | 120 | 135 | 150 |
| 10,0 - 14,0 ton | 12,0 - 18,0 ton | 17,0 - 22,0 ton | 20,0 - 29,0 ton | 27,0 - 35,0 ton |

EXCLUSIVE BENEFITS OF AN EXCLUSIVE PRODUCT!

OLS 50 | OLS 95 | OLS 160 |
 OLS 255 | OLS 300 | OLS 350 |
 OL 350TR | OLS 420 | OLS 550 |
 OLS 700 | OLS 980 | OLS 1400 |
 OLS 1700 | OLS 2200

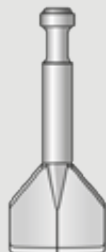
lingamdesign.it | 05.2024



CONICAL
TOOL



90° CUT STANDARD
CHISEL

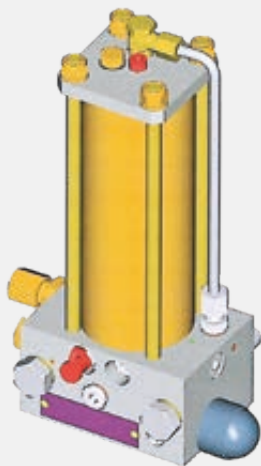


90° CUT ASPHALT
CUTTING SPADE



PARALLEL CUT ASPHALT
CUTTING SPADE

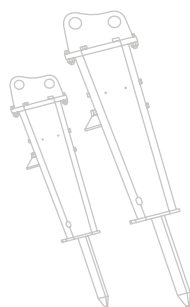
HYDRAULIC BREAKERS



WATERPROOF Version

automatic GREASING KIT

special SADDLE



Further information available on request.
 The manufacturer reserves the right to modify the
 technical features mentioned here without prior notice.

ROTAIR®

VIA BERNEZZO, 67
 12023 ▶ CARAGLIO (CN) ▶ ITALY



Tel: +39 0171.619676
 Fax: +39 0171.619677

» www.rotairspa.com
info@rotairspa.com

Company certified
 ISO 9001:2015

